

Other changeover switches



bd_09_04_01

Though SOCOMEC offers a large range of changeover switches, special adapted products are also available. These 2 pages show few examples of such special realisations. Do not hesitate to consult us.

Conformity to standards

- IEC 60947-3
- BS EN 60947-3
- EN 60947-3
- NBN EN 60947-3
- VDE 0660-107 (1992)

ATS BY-PASS switches



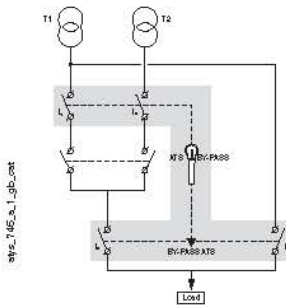
sw_134a_1_gb_01

Functions

They are used to isolate a changeover switching device and changeover the load to an emergency supply.

General characteristics

- 125 to 630 A ratings, 12 + 4 pole (only 4 pole).
- 3 stable positions.



sw_145a_1_gb_01

SIDER changeover switches



side_070a_1_gb_01

Functions

They are manually operated three or four-pole switches. They provide switching, source inversion and changeover under load for two low voltage power circuits, as well as their safety isolation.

General characteristics

- 125 to 1600 A ratings, 3 and 4 pole.
- 3 stable positions (I, 0, II) and facility to switch from one to the other under load (AC-22 and AC-23).
- Fully visible breaking.
- Double visible breaking.



Make before break contact motorised changeover switches



Functions

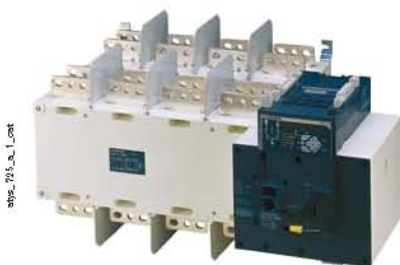
They provide switching, uninterrupted low voltage source inversion and safety isolation.

They are intended to be coupled with a UPS (I, I+II, II).

General characteristics

- ♦ 125 to 1600 A ratings, 3 and 4 pole.
- ♦ 3 stable positions (I - I+II - II).
- ♦ Uninterrupted automatic switching and source inversion under load with a UPS.
- ♦ Emergency manual operation.
- ♦ Padlocking in position 0 or the 3 positions on request.

Motorised mixed pole changeover switches



Functions

They provide switching and source inversion for low voltage sources of different power ratings.

General characteristics

- ♦ 1250 to 3200 A ratings, 3 and 4 pole.